



[www.landscapegrass.co.uk](http://www.landscapegrass.co.uk)





## Why Choose Landscape Grass?

At Landscape Grass, every customer is approached with the highest level of support, and every project is treated as unique.

We aim to advise on all areas of your job with full knowledge and expertise, giving you complete satisfaction in knowing you have the best product for your needs.

Each and every product in our collection is hand-selected by our team of experts. The selection made is based on a combined 30+ years' experience in the artificial grass sector.

We pride ourselves on the fact that our knowledge of quality, suitability, versatility, and sustainability means we are leaders in the industry.



### ALNWICK

**Pile Height:** 28mm  
**Widths:** 2m, 4m, 5m

Alnwick has a unique look of multizonal shades of green running through.

This one-of-a-kind grass has a softness within it, creating a perfect rare look to your garden.



### SKIPTON

**Pile Height:** 30mm  
**Widths:** 2m, 4m, 5m

Skipton is an extremely robust and hard-wearing fake grass which is ideal for a domestic garden setting and definitely one for consideration if you have pets.



### STIRLING

**Pile Height:** 38mm  
**Widths:** 2m, 4m, 5m

Stirling is a premium grass with a natural-looking green that makes it stand out from the rest.

Stirling is hardwearing and dense, with a soft-to-the-touch feel. It is suitable for all locations.





## EDINBURGH

**Pile Height:** 38mm  
**Widths:** 2m, 4m, 5m

Edinburg has a super-soft feel and is one of our most popular grasses.

Its softness is coupled with its rich green colour, and subtle brown thatching creates a perfectly natural looking lawn.



## WARWICK

**Pile Height:** 38mm  
**Widths:** 2m, 4m, 5m

Warwick is a vibrant green, soft artificial grass with an even pile and subtle thatching.

This realistic, fake grass looks great in both a large installation as well as a smaller courtyard setting.



## DURHAM

**Pile Height:** 40mm  
**Widths:** 2m, 4m, 5m

Durham is a dark and light lime multi-coloured grass.

Durham has a luscious soft feel to it, its thick thatch provides support and a lovely soft feel under foot.



## BALMORAL

**Pile Height:** 50mm  
**Widths:** 2m, 4m, 5m

Balmoral is one of the only artificial grasses that has a thick, soft and high pile.

Boasting extremely realistic features, you will find yourself looking twice at this grass with its thickness, accompanied by a combination of field and olive green.



## PUTT

**Pile Height:** 12mm  
**Widths:** 2m, 4m

Our putting green grass is constructed from polyamide with a monofilament curled yarn to give a hard-wearing and versatile grass to suit all standards of golfer and help to perfect their short-game skills.

Its tight weave produces a surface that delivers a true and consistent roll. Running at a stimp speed of 7ft to 8ft this grass will replicate the pace of most standard UK putting greens.



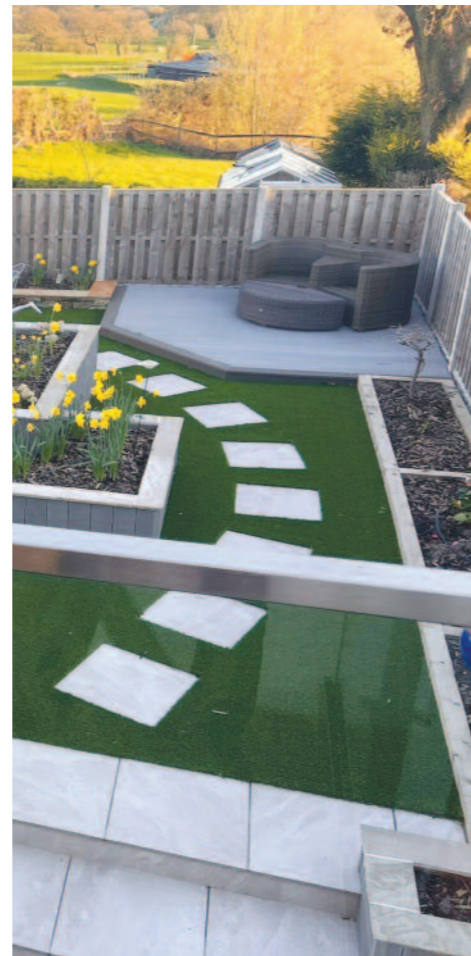
## HOCKEY

**Pile Height:** 14mm  
**Widths:** 2m, 4m

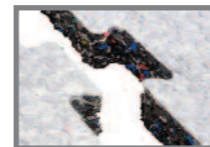
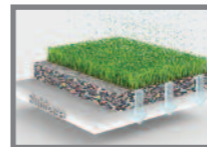
Hockey, Multisport, Dog agility/Training and Play areas. The pile height is constructed with PE monofilament, curled yarn that is UV stable.

This grass offers the perfect opportunity for the budding hockey/football player in your family to practice their skills in the space of their own home whilst also being able to be installed in professional sporting areas.



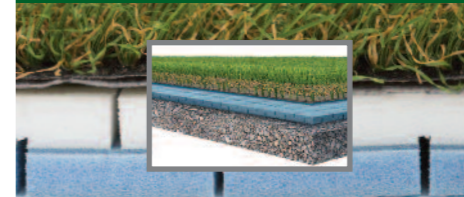


## PRO PLAY SHOCK PAD



A safety surface made of polyethylene tiles. Provides Critical Fall height (CFH). Designed for fitting underneath artificial grass. The tiles should be used underneath as sand-infilled artificial grass surface, as the weight of the sand helps to hold the tiles together. Available in 20mm, 25mm, 35mm and 45mm.

## ALVEO SHOCKPAD



Alveo 10mm/20mm Shockpad – Creates a safe playground environment. Provides Critical Fall height (CFH). Provides softness for comfortable playgrounds.

The heavy-duty nature of the crosslinked polyolefin foam makes it ideal even for heavily foot-trafficked areas, such as commercial applications, playgrounds and sports pitches.

Extended durability over many years. Delivered in lightweight rolls that are quick and easy to install. Perfect for both trade and DIY as it doesn't require specially trained personnel or specialist tools or machinery. Simply unroll directly onto your sub-base material and secure into position.

Releases no harmful chemicals or gases into soil, water, or air.

## AQUABOND



330ml Easy to use, all weather adhesive cartridges. Easy to apply to your artificial grass.

## WETFIX



Wetfix is available in both 5.5kg and 11kg. Hardener is included.



## JOINTING TAPE



The jointing tape is available in both a full roll and per linear metre.

## GLUE & TAPE MACHINE



- Designed to make joints in Artificial Grass quickly and easily.
- For applying adhesive to 200mm wide standard jointing tape.
- The stainless-steel glue box has two sizes of teeth.
- Applies the correct amount of glue to all the tape, creating a strong bond with the Artificial Grass.
- Works with all 2-part adhesives.
- Lightweight & easy to clean.